



Store these instructions in a safe place or you may access them on our website.

Instruction Sheet

Equipment Storage Rack 6 Ft. 121110



Take time to familiarize yourself with the use and maintenance of this equipment before using. Please file this Instruction Sheet in an accessible location. The Instruction Sheet must be read and familiar to anyone who is using Southpaw Enterprises Equipment.

IMPORTANT: Please check equipment immediately for any damage that may have resulted during shipping. If any damage has occurred, please contact Southpaw Enterprises, Inc. immediately.

MATERIALS LIST:

1 - Piece of channel 6 ft.-XH90072

4 - Eye bolts 3/8-16 x 1-1/4"-XH1022

8 - Fender Washers 3/8" x 1-1/2"-XH1004

4 - Clamp nuts 3/8-16-XH90135

2 - Channel end caps-XP2030

1 - Instruction Sheet

**Wall Mounting Hardware
Kit Sold Separately**

MOUNTING INSTRUCTIONS: are included with the hardware package for the type of wall you have.

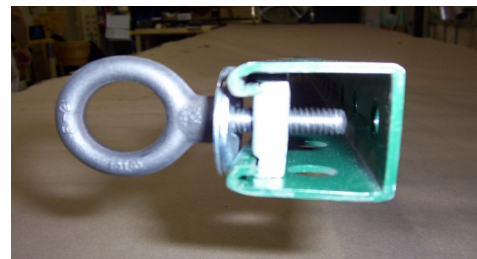
ATTACHING EYE BOLTS TO CHANNEL:

- On each of the four eye bolts put two fender washers on the threaded part of the eye bolt.
- Start a clamp nut onto the threaded end of each eye bolt with the grooves on the nut facing the eye of the eye bolt. See figure 1.
- Turn the channel nut so that it will go through the opening in the channel. Turn the eye bolt clockwise. The channel nut will turn and tighten as shown in figure 2.
- The position of the eye bolts may be adjusted by loosening the eye bolt, sliding it to a new position and retightening.

Figure 1



Figure 2



Safety Precautions - The safety of your clients is dependent on the appropriate choice of activity to match, yet challenge their physical abilities. Use appropriate spotting / safety techniques. In addition, the layout of your activity area, proper installation and maintenance of your equipment is critical. Southpaw equipment is not intended for recreational or outdoor use. Under no condition should this equipment be used without proper supervision.

This sheet is for example only. It is not meant to, in any way, replace local, county, state, or Federal standards. Be aware - it is your responsibility to find all pertinent safety information that pertains to your facility.

If you have any questions or comments, please call or write

Southpaw Enterprises, Inc.

P.O. Box 1047, Dayton, Ohio 45401-1047

Toll Free - (800) 228-1698

Please visit us at southpaw.com

© 2024 Southpaw Enterprises, Inc.