



# SOUTHPAW®

## Instruction Sheet #303129 Bubble Tube Wall Security Bracket & Lid



Take time to familiarize yourself with the use and maintenance of this equipment before using. Please file this Instruction Sheet in an accessible location. The Instruction Sheet must be read and familiar to anyone who is using Southpaw Enterprises Equipment.

Store these instructions along with the enclosed maintenance checklist in a safe place. You may also access them on our website.

**IMPORTANT: Please check equipment immediately for any damage that may have resulted during shipping. If any damage has occurred, please contact Southpaw Enterprises, Inc. immediately.**

### MATERIALS LIST:

- 1 - Acrylic Security Bracket set (2 total pieces/sections)
- 2 - 1/4" Hex Head Bolts-XH1234
- 2 - Flat Washers
- 2 - Toothed Flat Washers
- 2 - Wing Nuts-XH1127
- 2 - Wall Toggle Anchor sets (1 toggle and 1 screw per wall anchor set)
- 2 - Phillips Head Screws with collars
- Instruction Sheet
- Maintenance Checklist

### TOOLS NEEDED:

- Drill, 1/2" Drill Bit
- Phillips screwdriver or drill bit
- Small level,

### INSTALLATION:

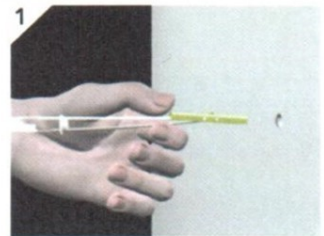
The security bracket comes in two pieces. Keep these 2 pieces joined together while following the procedures to mark the location of where to drill the holes in wall (or wood backed mirror) to secure the bracket to the wall using the toggle wall anchors.

The first "flat" piece side gets lined up and inserted into the bubble tube with the circular area oriented down and resting inside the top of bubble tube column. This will act as a "lid" for the top of the bubble tube. The second "L shaped" piece is the part of the bracket that will get secured to the wall. Loosen the wing nuts slightly to allow the two pieces to slide apart more to find the correct distance and position from the wall to bubble tube column, depending on your bubble tube model. Use piece that slides over the tube, attach the wall bracket and replace the wing nuts, keeping them loose enough to slide the bracket back and forth. Once you have the bubble tube in position, slide the assembled bracket over the tube, stopping just beneath the top of the tube. Slide the wall bracket out until it touches the wall, marking where the anchors will need to be placed to keep bracket secure. For drywall installation: Drill 1/2" holes, set toggle wall anchors (Refer to Step-By-Step diagram at right for how to install the toggle wall anchors) and secure bracket to the wall by inserting and tightening the screws from the toggle wall anchors. Tighten wing nuts.

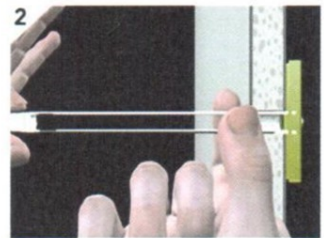
**PLEASE NOTE:** If attaching bracket to mirror, put Security Bracket on Bubble Tube and mark holes with pen, remove bracket and using a 1/4" drill bit, drill slowly through mirror stopping at the wood. Then replace bracket and attach with screws. Do not over tighten as that will warp mirror.

### Wall Toggle Anchor Directions:

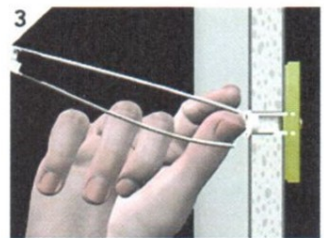
#### Step-By-Step



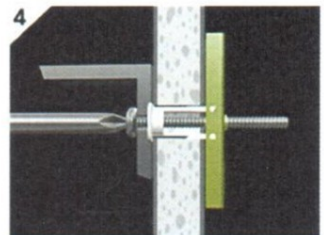
Drill a 1/2" (Ø13mm) hole. Hold metal channel flat alongside plastic straps and slide channel through hole. Minimum clearance behind wall: 1-7/8" (48mm).



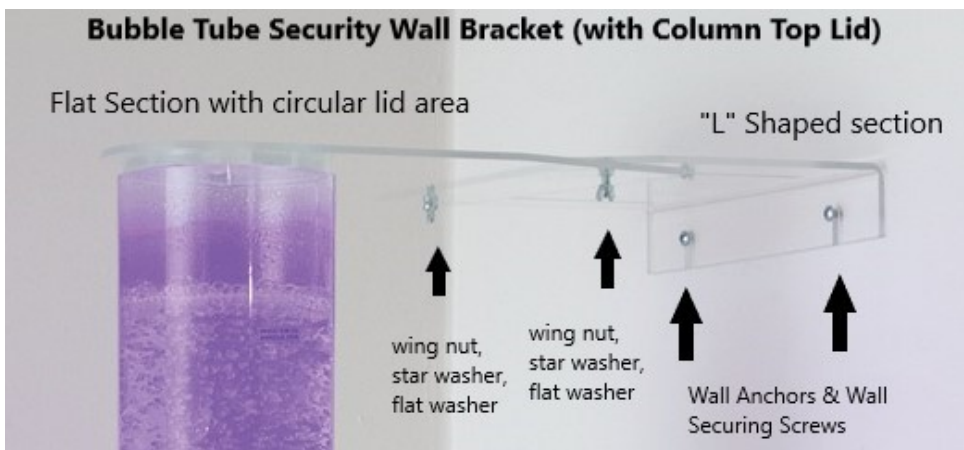
Hold ends of straps between thumb and forefinger and pull toward you until channel rests flush behind wall. Slide plastic cap along straps with other hand until flange of cap is flush with wall.



Snap straps at wall by pushing side to side, snapping off straps level with flange of cap.



Place item over flange. Insert bolt through item and tighten until flush against item, then stop.



**MAINTENANCE CHECKLIST**

✓All of the following wear points should be checked on a monthly basis and recorded on the checklist enclosed:

- Check bolts and wing nuts to make certain they are tightened. If loose, tighten.
- Check bracket for any cracks. If cracked, stop use and replace immediately.

**MATTING PRECAUTIONS:**

- Always use appropriate matting under and around equipment.

**CLEANING INSTRUCTIONS**

- Check with your infectious disease department before using these procedures.
- Check for client allergies first.
- Clean with a damp rag and a mild surface cleaning solution..
- Let air dry or wipe dry with a cloth

**Safety Precautions** - The safety of your clients is dependent on the appropriate choInteractive of activity to match, yet challenge their physical abilities. Use appropriate spotting / safety techniques. In addition, the layout of your activity area, proper installation and maintenance of your equipment is critical. Southpaw equipment is not intended for recreational or outdoor use. Under no condition should this equipment be used without proper supervision.

**This sheet is for example only.** It is not meant to, in any way, replace local, county, state, or Federal standards. Be aware - it is your responsibility to find all pertinent safety information that pertains to your facility.

If you have any questions or comments, please call or write  
Southpaw Enterprises, Inc.  
P.O. Box 1047, Dayton, Ohio 45401 -1047  
Toll Free - (800) 228-1698  
Visit us at southpaw.com