



SOUTHPAW®

Instruction Sheet Relaxation Star Infinity Wall Panel # 303313



Take time to familiarize yourself with the use and maintenance of this equipment before using. Please file this Instruction Sheet in an accessible location. The Instruction Sheet must be read and familiar to anyone who is using Southpaw Enterprises Equipment.

Store these instructions along with the enclosed maintenance checklist in a safe place. You may also access them on our website.

MATERIALS LIST:

Star Infinity Wall Panel (303313)	(6) 1-1/2" Wood Screws (XH90430)	Drill
(2) 27" length wood 2 x 4's (XW7100)	Instruction Sheet	1/2" Drill Bit
(4) Wall Toggle Anchor sets (XH90651)	Maintenance Checklist	3/16" Drill Bit

TOOLS NEEDED:

INSTALLATION:

Position 2" x 4" lengthwise level on the wall at top height where activity wall will be placed. Drill 1/2" holes through 2 x 4's into wall. Set toggle wall anchors (following the wall toggle anchor installation instructions on right side of this page), and secure 2" x 4" to the wall with the long screw bolt from wall toggle anchor set. Set activity wall on 2" x 4", mark where the bottom of the activity wall is. Remove wall panel. From the mark that has been made on the wall, mark another line 1/2" above that line and position 2" x 4" on the on the second mark, making certain it is level. Repeat above steps for mounting 2 x 4. Replace wall panel, secure panel to the 2" x 4" frame using three 1.5" wood screws on the top and three 1.5" wood screws on the bottom.

INSTRUCTIONS FOR USE:

Plug power supply cord into power supply outlet source. The Illuminator for the wall panel is set at the factory and has no user controls. Light source should turn on within 10-15 seconds. The "star" lights will illuminate and then auto-cycle (in a fixed rotation of colors) through the different colored LED lights. When finished using the wall panel, power off the wall panel by unplugging the power supply cord from the power supply outlet source.

MAINTENANCE CHECKLIST:

- ✓ All of the following wear points should be checked on a monthly basis and recorded on the checklist enclosed:
- Check the wood surface and edges for splinters. If found, discontinue use until repaired. You may repair it by sanding the area smooth with a medium grit sandpaper, and applying two coats of clear lacquer to the repaired area.

CLEANING INSTRUCTIONS:

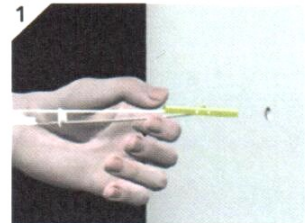
- Front clear plastic panel is made of acrylic. **DO NOT USE ALCOHOL-BASED CLEANERS ON THE ACRYLIC MIRROR.** This includes all pre-moistened wipes.
- Do not use abrasives or paper towels on the acrylic mirror surface.
- Check with your infectious disease department before using these procedures.
- Check for client allergies first.
- Clean with a damp rag and a mild surface cleaning solution. Let air dry or wipe dry with a cloth.

Safety Precautions - The safety of your clients is dependent on the appropriate choice of activity to match, yet challenge their physical abilities. Use appropriate spotting / safety techniques. In addition, the layout of your activity area, proper installation and maintenance of your equipment is critical. Southpaw equipment is not intended for recreational or outdoor use. Under no condition should this equipment be used without proper supervision.

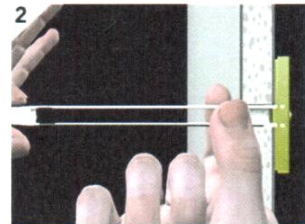
This sheet is for example only. It is not meant to, in any way, replace local, county, state, or Federal standards. Be aware - it is your responsibility to find all pertinent safety information that pertains to your facility.

Wall Toggle Anchor Installation instructions:

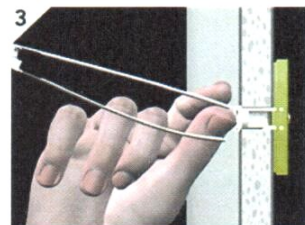
Step-By-Step



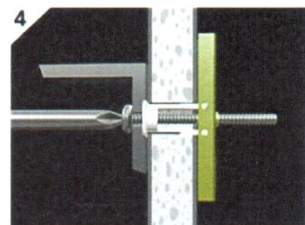
Drill a 1/2" (Ø13mm) hole. Hold metal channel flat alongside plastic straps and slide channel through hole. Minimum clearance behind wall: 1-7/8" (48mm).



Hold ends of straps between thumb and forefinger and pull toward you until channel rests flush behind wall. Slide plastic cap along straps with other hand until flange of cap is flush with wall.



Snap straps at wall by pushing side to side, snapping off straps level with flange of cap.



Place item over flange. Insert bolt through item and tighten until flush against item, then stop.