



## Instruction Sheet: Puzzle Panel 303804

Store these instructions along with the enclosed maintenance checklist in a safe place. You may also access them on our website.



Take time to familiarize yourself with the use and maintenance of this equipment before using. Please file this Instruction Sheet in an accessible location. The Instruction Sheet must be read and familiar to anyone who is using Southpaw Enterprises Equipment.

**IMPORTANT: Please check equipment immediately for any damage that may have resulted during shipping. If any damage has occurred, please contact Southpaw Enterprises, Inc. immediately.**

### MATERIALS LIST:

Puzzle Panel  
2 - 2 x 4's  
4 Wall Anchors  
6 - 1-1/2" Wood Screws  
Ditty Bag with Puzzle Pieces and Boards

### TOOLS NEEDED:

Drill  
1/2" Drill Bits

### INSTALLATION:

Position 2" x 4" lengthwise level on the wall at top height where puzzle panel will be placed. Drill holes through 2 x 4's into walls. Set anchors and secure 2" x 4" to the wall (see Figures 1-4). Set puzzle panel on 2" x 4", mark where the bottom of the puzzle panel is, remove puzzle panel. From the mark that has been made on the wall, mark another line 1/2" above that line and position 2" x 4" on the second mark, making certain it is level. Repeat above steps for mounting 2 x 4. Replace puzzle panel, secure wall to the 2" x 4" frame with three wood screws on the top and three wood screws on the bottom.

This puzzle panel can be used in conjunction with the Sound/Music Activity Panel and the Fiber Optic Activity Panel and the Tactile Panel.

### INSTRUCTIONS FOR USE:

Attach Velcro puzzle pieces to puzzle panel. Duplicate patterns on the puzzle board or create designs of your own.

### MAINTENANCE CHECKLIST

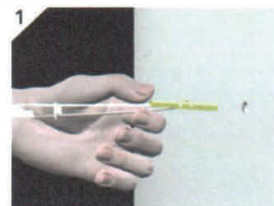
✓All of the following wear points should be checked on a monthly basis and recorded on the checklist enclosed:

- Check the wood surface and edges for splinters. If found, discontinue use until repaired. You may repair it by sanding the area smooth with a medium grit sandpaper, and applying two coats of clear lacquer to the repaired area.

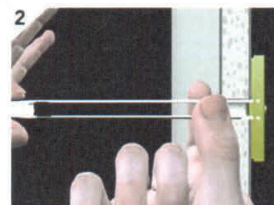
### MATTING PRECAUTIONS:

- Always use appropriate matting under and around equipment.

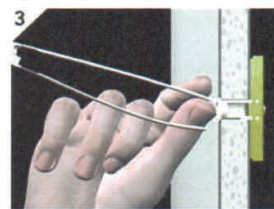
### Step-By-Step



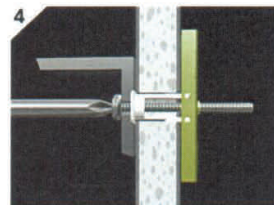
Drill a 1/2" (Ø13mm) hole. Hold metal channel flange alongside plastic straps and slide channel through hole. Minimum clearance behind wall: 1-7/8" (48mm).



Hold ends of straps between thumb and forefinger and pull toward you until channel rests flush behind wall. Slide plastic cap along straps with other hand until flange of cap is flush with wall.



Snap straps at wall by pushing side to side, snapping off straps level with flange of cap.



Place item over flange. Insert bolt through item and tighten until flush against item, then stop.

## **CLEANING INSTRUCTIONS**

- Check with your infectious disease department before using these procedures.
- Check for client allergies first.
- Clean with a damp rag and a mild surface cleaning solution.
- Let air dry or wipe dry with a cloth.

**Safety Precautions** - The safety of your clients is dependent on the appropriate choice of Puzzle to match, yet challenge their physical abilities. Use appropriate spotting / safety techniques. In addition, the layout of your Puzzle area, proper installation and maintenance of your equipment is critical. Southpaw equipment is not intended for recreational or outdoor use. Under no condition should this equipment be used without proper supervision.

**This sheet is for example only.** It is not meant to, in any way, replace local, county, state, or Federal standards. Be aware - it is your responsibility to find all pertinent safety information that pertains to your facility.



If you have any questions or comments, please call or write  
Southpaw Enterprises, Inc.  
P.O. Box 1047, Dayton, Ohio 45401 -1047  
Toll Free - (800) 228-1698  
Come see us on the World Wide Web at <http://southpawenterprises.com>