



# Instruction Sheet: 7600 - Mantis

Store these instructions with the enclosed maintenance checklist in a safe place. You may also access them on our website.



Take time to familiarize yourself with the use and maintenance of this equipment before using. Please file this Instruction Sheet in an accessible location. The Instruction Sheet must be read and familiar to anyone who is using Southpaw Enterprises Equipment.

**IMPORTANT: Please check equipment immediately for any damage that may have resulted during shipping. If any damage has occurred, please contact Southpaw Enterprises, Inc. immediately.**

#### MATERIALS LIST:

4 - Padded Base Pieces  
1 - Crossbeam with Eyebolts  
4 - Connector Pins  
12 - Bolts XH90670

24 - Washers XH1104  
12 - Locking Nuts XH1006  
Instruction Sheet  
Maintenance Checklist

#### TOOLS NEEDED:

Rubber Mallet  
2 - Wrenches (3/4" or adjustable)

#### MINIMUM HEIGHT REQUIREMENT AND SPACE NEEDED: 8 Feet

The Mantis requires a clearance of three inches on the sides of the structure and two feet to the rear and front of the structure.

**WORKING LOAD:** 500 lbs.

#### HEIGHT ADJUSTER OR SAFETY ROTATIONAL DEVICE:

A Southpaw Safety Rotational Device (#2000) should be used with all equipment to prevent damage to equipment. A Southpaw Height Adjuster (#5000) will make adjusting the height of your equipment easier.

#### MAINTENANCE CHECKLIST

✓ All of the following wear points should be checked on a daily, weekly or monthly basis (as indicated) and recorded on the checklist enclosed:

- Check connector pins and all bolts and nuts. Make certain connector pins are completely through both sides of frame. If nuts are found to be loose, tighten before further use.
- Try to turn the eye bolt on a **DAILY** basis. If it turns at all, remove the eye bolt, coupling nut and lock nuts. Clean each piece and then re-install per the directions using Loctite 242 threadlocker.
- Check all nuts and bolts making certain that they are tight on a weekly basis.
- **WARNING:** Check eye bolt for wear and movement. If more than 30% of the thickness of the eye bolt is worn away (See fig. 1), discontinue use until replaced. If the eyebolt moves excessively, discontinue use until all hardware is checked and tightened.
- Check the vinyl covers for tears or loose stitches. If tears or loose stitches are found, discontinue use until repaired.
- A small amount of grease at the point where the eye bolt and safety snap connect will greatly extend the life of the eye bolt and safety snap.

#### MATTING PRECAUTIONS:

Always use appropriate matting.

#### STORAGE PROCEDURES

- Store where not accessible by clients without proper supervision.

#### CLEANING INSTRUCTIONS

- Check with your infectious disease department before using these procedures.
- Check for client allergies first.
- Clean with a damp cloth using soap and water or disinfectant.
- Dry before using.

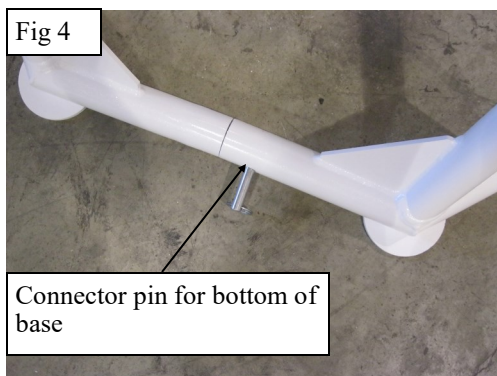
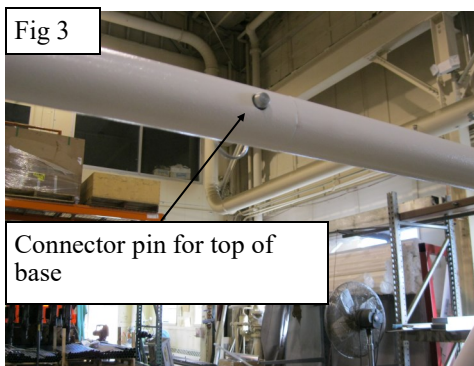
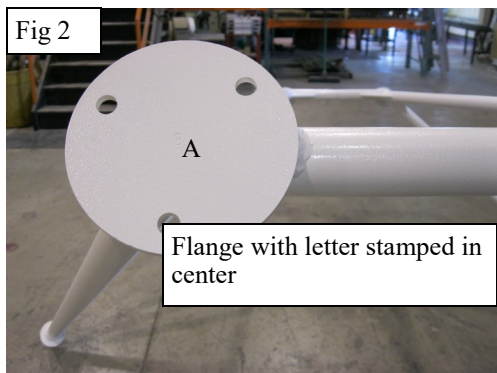


Fig 1. Wear pattern



## ASSEMBLY:

On the top of the flange on each of the four base pieces you will find a letter A-D (see Fig 2). You will slide together piece A and B for one side of the base; and piece C and D for the other side. It is easiest if you place one half of the base on a saw horse with the solid round peg facing up & out. Lubricate the solid round peg with dish soap and using two people, slide the mating halves together. You may need a rubber mallet to insure the pieces fit snugly together. Once connected, the bases will be free standing. Put a connector pin in both the top and bottom of the base (Fig 3 & 4) so that the sides will not slide apart. Set the bases apart and lift the top piece on so that the letters on the top flanges match the letters on the base pieces, lining up the bolt holes. Put a washer on a bolt and put it through a set of lined up holes; put a washer on the other end of the bolt. Put a locking nut on the bolt and tighten finger tight. Repeat this step with the other holes. Once all bolts have been finger tightened, then use the adjustable or 3/4" wrench to tighten all 12 bolts securely.



## CAUTION

- ♦ Check ceiling eye bolt for wear and movement. Do not let wear exceed 30% of eyebolt. If the eye bolt moves excessively, discontinue use until all hardware is checked and tightened. Use a Southpaw Safety Rotational Device to prevent abnormal wear.
- ♦ Floor mats of proper thickness should be positioned properly under and around all suspended equipment.

**Safety Precautions** - The safety of your clients is dependent on the appropriate choice of activity to match, yet challenge their physical abilities. Use appropriate spotting / safety techniques. In addition, the layout of your activity area, proper installation and maintenance of your equipment is critical. Southpaw equipment is not intended for recreational or outdoor use. Under no condition should this equipment be used without proper supervision.

**This sheet is for example only.** It is not meant to, in any way, replace local, county, state, or Federal standards. Be aware - it is your responsibility to find all pertinent safety information that pertains to your facility.

If you have any questions or comments, please call or write

Southpaw Enterprises, Inc.

P.O. Box 1047, Dayton, Ohio 45401-1047

Toll Free - (800) 228-1698

Please visit us at [southpaw.com](http://southpaw.com)

© 2025 Southpaw Enterprises, Inc.