



Store these instructions along with the enclosed maintenance checklist in a safe place. You may also access them on our website.

Instruction Sheet: Bubble Tube Security Bracket 303129



Take time to familiarize yourself with the use and maintenance of this equipment before using. Please file this Instruction Sheet in an accessible location. The Instruction Sheet must be read and familiar to anyone who is using Southpaw Enterprises Equipment.

IMPORTANT: Please check equipment immediately for any damage that may have resulted during shipping. If any damage has occurred, please contact Southpaw Enterprises, Inc. immediately.

MATERIALS LIST:

- 1 - Security Bracket (2 pieces)
- 2 - Wall Anchors
- 2 - 1/4" Bolts
- 2 - Washers
- 2 - Star Washers
- 2 - Wing Nuts

TOOLS NEEDED:

- Drill
- 1/2" Drill Bits

INSTALLATION:

The security bracket comes in two pieces. The first piece will slide over the bubble tube. The second piece is a bracket with a lip that will be secured to the wall. Take the wing nuts off of the piece that slides over the tube, attach the wall bracket and replace the wing nuts, keeping them loose enough to slide the bracket back and forth. Once you have the bubble tube in position, slide the assembled bracket over the tube, stopping just beneath the top of the tube. Slide the wall bracket out until it touches the wall, marking where the anchors will need to be placed to keep bracket secure. Drill holes, set anchors and secure bracket to the wall. Tighten wing nuts.



MAINTENANCE CHECKLIST

✓ All of the following wear points should be checked on a monthly basis and recorded on the checklist enclosed:

- Check bolts and wing nuts to make certain they are tightened. If loose, tighten.
- Check bracket for any cracks. If cracked, stop use and replace immediately.

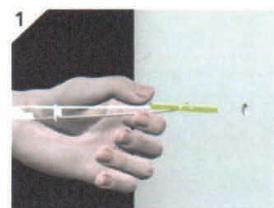
MATTING PRECAUTIONS:

- Always use appropriate matting under and around equipment.

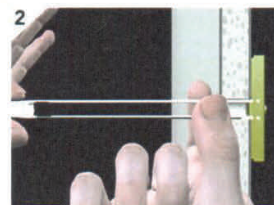
CLEANING INSTRUCTIONS

- Check with your infectious disease department before using these procedures.
- Check for client allergies first.
- Clean with a damp rag and a mild surface cleaning solution.
- Let air dry or wipe dry with a cloth.

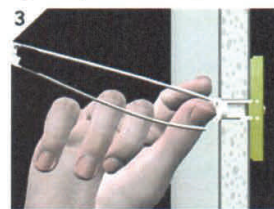
Step-By-Step



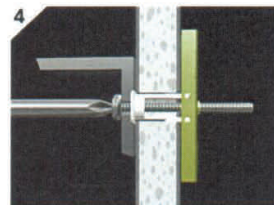
Drill a 1/2" (Ø13mm) hole. Hold metal channel flange alongside plastic straps and slide channel through hole. Minimum clearance behind wall: 1-7/8" (48mm).



Hold ends of straps between thumb and forefinger and pull toward you until channel rests flush behind wall. Slide plastic cap along straps with other hand until flange of cap is flush with wall.



Snap straps at wall by pushing side to side, snapping off straps level with flange of cap.



Place item over flange. Insert bolt through item and tighten until flush against item, then stop.

Safety Precautions - The safety of your clients is dependent on the appropriate choice of activity to match, yet challenge their physical abilities. Use appropriate spotting / safety techniques. In addition, the layout of your activity area, proper installation and maintenance of your equipment is critical. Southpaw equipment is not intended for recreational or outdoor use. Under no condition should this equipment be used without proper supervision.

This sheet is for example only. It is not meant to, in any way, replace local, county, state, or Federal standards. Be aware - it is your responsibility to find all pertinent safety information that pertains to your facility.



If you have any questions or comments, please call or write
Southpaw Enterprises, Inc.
P.O. Box 1047, Dayton, Ohio 45401 -1047
Toll Free - (800) 228-1698
Come see us on the World Wide Web at <http://southpawenterprises.com>