



Store these instructions along with the enclosed maintenance checklist in a safe place. You may also access them on our website.

Instruction Sheet: Fiber Optic Activity Panel 303803



Take time to familiarize yourself with the use and maintenance of this equipment before using. Please file this Instruction Sheet in an accessible location. The Instruction Sheet must be read and familiar to anyone who is using Southpaw Enterprises Equipment.

IMPORTANT: Please check equipment immediately for any damage that may have resulted during shipping. If any damage has occurred, please contact Southpaw Enterprises, Inc. immediately.

MATERIALS LIST:

Activity Panel
2 - 2 x 4's
4 Wall Anchors
6 - 1-1/2" Wood Screws
Wooden Car with Handle

TOOLS NEEDED:

Drill
1/2" Drill Bits

INSTALLATION:

Activity wall needs to be positioned within four feet of an electrical outlet. Position 2" x 4" lengthwise level on the wall at top height where activity wall will be placed. Drill holes through 2 x 4's into wall. Set anchors and secure 2" x 4" to the wall. Set activity wall on 2" x 4", mark where the bottom of the activity wall is, remove activity wall. From the mark that has been made on the wall, mark another line 1/2" above that line and position 2" x 4" on the on the second mark, making certain it is level. Repeat above step for mounting 2 x 4. Replace activity wall, secure wall to the 2" x 4" frame with three wood screws on the top and three wood screws on the bottom. Plug in to wall - has 5-10 second delay on lighting. Light source is LED and should not require any maintenance.

This activity wall can be used in conjunction with the Sound/Music Activity Panel and the Tactile Activity Panel. When mounting subsequent panels be certain to align the slotted raceway for the wooden car to move between each panel.

INSTRUCTIONS FOR USE:

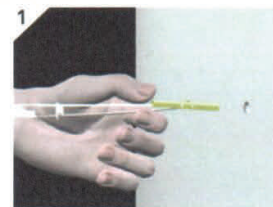
Handle for wooden car is made to fit in between the two grooves and the face of the activity panel.

MAINTENANCE CHECKLIST

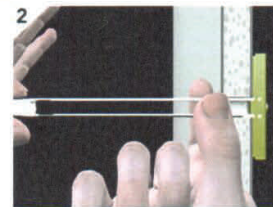
✓All of the following wear points should be checked on a monthly basis and recorded on the checklist enclosed:

- Check for frayed wires.
- Check the wood surface and edges for splinters. If found, discontinue use until repaired. You may repair it by sanding the area smooth with a medium grit sandpaper, and applying two coats of clear lacquer to the repaired area.
- Check all components to make certain they remain secured to activity wall. Tighten or secure components as necessary.

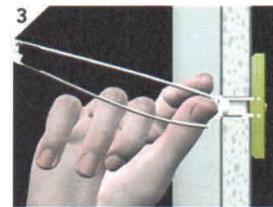
Step-By-Step



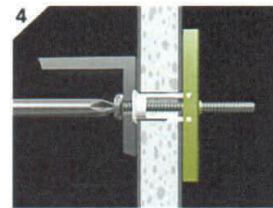
Drill a 1/2" (Ø13mm) hole. Hold metal channel flat alongside plastic straps and slide channel through hole. Minimum clearance behind wall: 1-7/8" (48mm).



Hold ends of straps between thumb and forefinger and pull toward you until channel rests flush behind wall. Slide plastic cap along straps with other hand until flange of cap is flush with wall.



Snap straps at wall by pushing side to side, snapping off straps level with flange of cap.



Place item over flange. Insert bolt through item and tighten until flush against item, then stop.

MATTING PRECAUTIONS:

- Always use appropriate matting under and around equipment.

CLEANING INSTRUCTIONS

- Check with your infectious disease department before using these procedures.
- Check for client allergies first.
- Clean with a damp rag and a mild surface cleaning solution.
- Let air dry or wipe dry with a cloth.
- Fiber Optic Strands should be cleaned with a mild disinfectant after each use. Spray cleaner on a cloth and wipe a dozen strands or so at a time until all are clean. **DO NOT USE A BLEACHBASED CLEANER ON THE STRANDS.**

Safety Precautions - The safety of your clients is dependent on the appropriate choice of activity to match, yet challenge their physical abilities. Use appropriate spotting / safety techniques. In addition, the layout of your activity area, proper installation and maintenance of your equipment is critical. Southpaw equipment is not intended for recreational or outdoor use. Under no condition should this equipment be used without proper supervision.

This sheet is for example only. It is not meant to, in any way, replace local, county, state, or Federal standards. Be aware - it is your responsibility to find all pertinent safety information that pertains to your facility.



If you have any questions or comments, please call or write
Southpaw Enterprises, Inc.
P.O. Box 1047, Dayton, Ohio 45401 -1047
Toll Free - (800) 228-1698
Come see us on the World Wide Web at <http://southpawenterprises.com>



southpaw enterprises, inc.[®]

Store these instructions along with the enclosed maintenance checklist in a safe place. You may also access them on our website.

Instruction Sheet:

Sound/Music Activity Panel 303802



Take time to familiarize yourself with the use and maintenance of this equipment before using. Please file this Instruction Sheet in an accessible location. The Instruction Sheet must be read and familiar to anyone who is using Southpaw Enterprises Equipment.

IMPORTANT: Please check equipment immediately for any damage that may have resulted during shipping. If any damage has occurred, please contact Southpaw Enterprises, Inc. immediately.

MATERIALS LIST:

Activity Panel
2 - 2 x 4's
4 Wall Anchors
6 - 1-1/2" Wood Screws
Wooden Car with Handle
1 Wooden Drum Stick

TOOLS NEEDED:

Drill
1/2" Drill Bits

INSTALLATION:

Position 2" x 4" lengthwise level on the wall at top height where activity wall will be placed. Drill holes through 2 x 4's into wall. Set anchors and secure 2" x 4" to the wall. Set activity wall on 2" x 4", mark where the bottom of the activity wall is, remove activity wall. From the mark that has been made on the wall, mark another line 1/2" above that line and position 2" x 4" on the on the second mark, making certain it is level. Repeat steps above for mounting 2 x 4. Replace activity wall, secure wall to the 2" x 4" frame with three wood screws on the top and three wood screws on the bottom.

This activity wall can be used in conjunction with the Tactile Activity Panel and the Fiber Optic Activity Panel. When mounting subsequent panels be certain to align the slotted raceway for the wooden car to move between each panel.

INSTRUCTIONS FOR USE:

Handle for wooden car is made to fit in between the two grooves and the face of the activity panel.

MAINTENANCE CHECKLIST

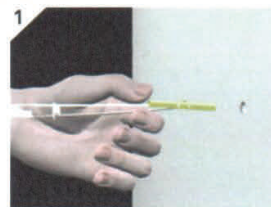
✓All of the following wear points should be checked on a monthly basis and recorded on the checklist enclosed:

- Check the wood surface and edges for splinters. If found, discontinue use until repaired. You may repair it by sanding the area smooth with a medium grit sandpaper, and applying two coats of clear lacquer to the repaired area.
- Check all components to make certain they remain secured to activity wall. Tighten or secure components as necessary.

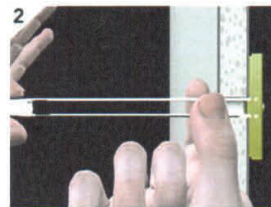
MATTING PRECAUTIONS:

- Always use appropriate matting under and around equipment.

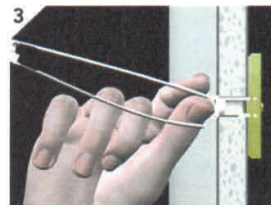
Step-By-Step



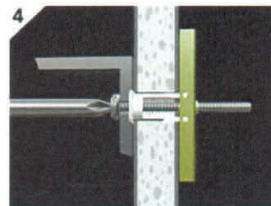
Drill a 1/2" (Ø13mm) hole. Hold metal channel flat alongside plastic straps and slide channel through hole. Minimum clearance behind wall: 1-7/8" (48mm).



Hold ends of straps between thumb and forefinger and pull toward you until channel rests flush behind wall. Slide plastic cap along straps with other hand until flange of cap is flush with wall.



Snap straps at wall by pushing side to side, snapping off straps level with flange of cap.



Place item over flange. Insert bolt through item and tighten until flush against item, then stop.

CLEANING INSTRUCTIONS

- Check with your infectious disease department before using these procedures.
- Check for client allergies first.
- Clean with a damp rag and a mild surface cleaning solution.
- Let air dry or wipe dry with a cloth.

Safety Precautions - The safety of your clients is dependent on the appropriate choice of activity to match, yet challenge their physical abilities. Use appropriate spotting / safety techniques. In addition, the layout of your activity area, proper installation and maintenance of your equipment is critical. Southpaw equipment is not intended for recreational or outdoor use. Under no condition should this equipment be used without proper supervision.

This sheet is for example only. It is not meant to, in any way, replace local, county, state, or Federal standards. Be aware - it is your responsibility to find all pertinent safety information that pertains to your facility.



If you have any questions or comments, please call or write
Southpaw Enterprises, Inc.
P.O. Box 1047, Dayton, Ohio 45401 -1047
Toll Free - (800) 228-1698
Come see us on the World Wide Web at <http://southpawenterprises.com>



Instruction Sheet: Tactile Activity Panel 303801

Store these instructions along with the enclosed maintenance checklist in a safe place. You may also access them on our website.



Take time to familiarize yourself with the use and maintenance of this equipment before using. Please file this Instruction Sheet in an accessible location. The Instruction Sheet must be read and familiar to anyone who is using Southpaw Enterprises Equipment.

IMPORTANT: Please check equipment immediately for any damage that may have resulted during shipping. If any damage has occurred, please contact Southpaw Enterprises, Inc. immediately.

MATERIALS LIST:

Activity Panel
2 - 2 x 4's
4 Wall Anchors
6 - 1-1/2" Wood Screws
Wooden Car with Handle

TOOLS NEEDED:

Drill
1/2" Drill Bits

INSTALLATION:

Position 2" x 4" lengthwise level on the wall at top height where activity wall will be placed. Drill holes through 2 x 4's into walls. Set anchors and secure 2" x 4" to the wall. Set activity wall on 2" x 4", mark where the bottom of the activity wall is, remove activity wall. From the mark that has been made on the wall, mark another line 1/2" above that line and position 2" x 4" on the second mark, making certain it is level. Repeat above steps for mounting 2 x 4. Replace activity wall, secure wall to the 2" x 4" frame with three wood screws on the top and three wood screws on the bottom.

This activity wall can be used in conjunction with the Sound/Music Activity Panel and the Fiber Optic Activity Panel. When mounting subsequent panels be certain to align the slotted raceway for the wooden car to move between each panel.

INSTRUCTIONS FOR USE:

Handle for wooden car is made to fit in between the two grooves and the face of the activity panel.

MAINTENANCE CHECKLIST

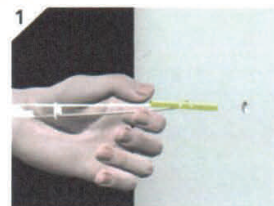
✓All of the following wear points should be checked on a monthly basis and recorded on the checklist enclosed:

- Check the wood surface and edges for splinters. If found, discontinue use until repaired. You may repair it by sanding the area smooth with a medium grit sandpaper, and applying two coats of clear lacquer to the repaired area.
- Check all components to make certain they remain secured to activity wall. Tighten or secure components as necessary.

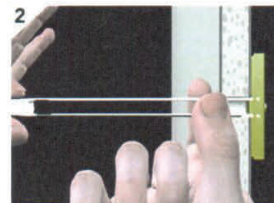
MATTING PRECAUTIONS:

- Always use appropriate matting under and around equipment.

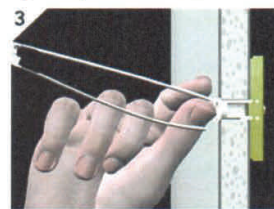
Step-By-Step



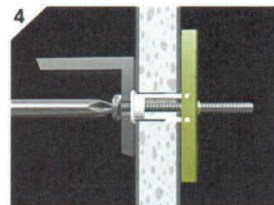
Drill a 1/2" (Ø13mm) hole. Hold metal channel flange alongside plastic straps and slide channel through hole. Minimum clearance behind wall: 1-7/8" (48mm).



Hold ends of straps between thumb and forefinger and pull toward you until channel rests flush behind wall. Slide plastic cap along straps with other hand until flange of cap is flush with wall.



Snap straps at wall by pushing side to side, snapping off straps level with flange of cap.



Place item over flange. Insert bolt through item and tighten until flush against item, then stop.

CLEANING INSTRUCTIONS

- Check with your infectious disease department before using these procedures.
- Check for client allergies first.
- Clean with a damp rag and a mild surface cleaning solution.
- Let air dry or wipe dry with a cloth.

Safety Precautions - The safety of your clients is dependent on the appropriate choice of activity to match, yet challenge their physical abilities. Use appropriate spotting / safety techniques. In addition, the layout of your activity area, proper installation and maintenance of your equipment is critical. Southpaw equipment is not intended for recreational or outdoor use. Under no condition should this equipment be used without proper supervision.

This sheet is for example only. It is not meant to, in any way, replace local, county, state, or Federal standards. Be aware - it is your responsibility to find all pertinent safety information that pertains to your facility.



If you have any questions or comments, please call or write
Southpaw Enterprises, Inc.
P.O. Box 1047, Dayton, Ohio 45401 -1047
Toll Free - (800) 228-1698
Come see us on the World Wide Web at <http://southpawenterprises.com>